

Advanced endovascular aortic workshop



COURSE DIRECTORS

Stéphan Haulon, *Lille, France*

Tara Mastracci, *London, United Kingdom*

Timothy Resch, *Malmö, Sweden*

2017

CHRU Lille, FRANCE

May 09-19

3rd EDITION



Welcome to Lille and to the last edition of the Advanced Endovascular Aortic Workshop in this city!

During these two coming weeks you will learn 'what to do and how to do it' through daily live case demonstrations, hands-on workshops (including bench endograft and percutaneous closure system deployment), and training in 3D workstation use and advanced imaging applications. The faculties are experts in this field and will provide the latest guidance on patient selection, endograft planning and implantation tips and tricks. The promising results that can be achieved with EVAR, TEVAR, and branched and fenestrated endografting will be shown.

The exam to obtain your official Lille University French diploma will take place on Friday May 19.

I hope you will enjoy your stay with us.

Stéphan Haulon

COURSE DIRECTORS

Stéphan Haulon, *Lille, France*

Tara Mastracci, *London, United Kingdom*

Timothy Resch, *Malmö, Sweden*

INTERNATIONAL FACULTY

Nuno Dias, *Malmö, Sweden*

Tilo Kölbel, *Hamburg, Germany*

Mark R. Tyrrell, *London, United Kingdom*

Jason Wilkins, *London, United Kingdom*

CONTENT & TOPICS

- Live cases from the hybrid room every day
- Hands-on workshops
- Training in 3D workstation use
- Lectures from international endovascular experts
- Dedicated sessions (live cases + lectures) on EVAR, TEVAR, Iliac Branch, FEVAR and BEVAR, Percutaneous closure systems
- Complex cases sessions (live cases + lectures) on dissections and arch aneurysms

Tuesday, May 09 / 08.30 - 16.30

Infra-renal AAA

Chairmen: *Mark Tyrrell, Jason Wilkins* (London, United Kingdom)

Live cases: 2 or 3 EVAR

Topics to be covered (presentations, discussions & exercises):

- **Why EVAR, Who to EVAR?**
- **The Zenith Flex & Alpha Abdominal EVAR devices:**
 - Overview – How they work & deploy, markers & overlaps. Key steps.
 - Key differences between Flex & Alpha
- **Choosing device components:**
 - 3D workstation/software, graft planning & sizing (2 methods), anatomical limitations & IFU
- **Overcoming challenges and recognizing the impossible**
- **Operative planning**
- **Cannulation made easy:**
 - An introduction to sheathes, wires & catheters
 - Failed cannulation: snare, bailout to AUI (converter)
- **Meaningful informed consent**
- **EVAR and Ruptured AAA**
- **Emergency Planning**
 - Go/No Go
- **Post-EVAR surveillance & re-intervention**
- **Getting it wrong – errors that are no longer original!**

Wednesday, May 10 / 08.30 - 16.30

Iliac branch

Chairman: *Nuno Dias* (Malmö, Sweden)

Live cases: 2 Iliac branch

- Welcome & outline of the day
- ZBIS device overview
- Graft planning & sizing, patient selection
- Deployment graft, tips & tricks
- Results from the literature
- Percutaneous closure devices: how I use the Proglide?
- Case reports on complications following EVAR
- Planning endografts with 3D workstation: introducing "flightplan for EVAR"

20:00 Welcoming dinner: Le Barbut d'Anvers

(Meeting point at the restaurant: 1 bis, rue St-Etienne - Lille)

Thursday, May 11 / 08.30 - 16.30

TEVAR + hands on workshop

Chairman: *Tara Mastracci* (London, United Kingdom)

Live cases: 2 TEVAR

- Welcome & outline of the day
- Zenith Alfa and TX2 device overview
- Clinical evidence for TEVAR in descending aneurysm
- Planning for TEVAR
- Procedural tips and tricks
- Is revascularization of LSA and CA necessary?
- Follow up after TEVAR
- Acute dissections: who should we treat, and how?
- CTA and MRI in aortic dissections
- TEVAR for chronic dissections: indications for TEVAR, long term results
- TEVAR video case presentations
- Afternoon hands-on workshop:
 - EVAR, IBD and TEVAR bench deployment
 - Percutaneous closure devices
 - 3D workstation planning
 - Embolization
 - Simulators

Friday, May 12 / 08.30 - 16.30

Fenestrated endografts

Chairman: *Tara Mastracci* (London, United Kingdom)

Live cases: 2 FEVAR

- Welcome & outline of the day
- Fenestrated device overview
- Implanting a fenestrated endograft, How I do it? (videos)
- Planning and sizing fenestrated endografts
- Assessing ideal anatomy for a good fenestrated repair
- Walking through the planning of a case
- Case reports on complex anatomies
- Benefit of CBCT and the use of fusion imaging
- Fenestrated cuffs for proximal type 1 endoleak (EVAR rescue) and other options for rescue
- Secondary procedures after FEVAR

Monday, May 15 / 08.30 - 16.30

Branched endografts

Chairman: *Tim Resch* (Malmö, Sweden)

Live cases: 2 BEVAR

- Tips and tricks for fenestrated endografts... how to get into and out of trouble?
- Device overview, planning and sizing of T-branch
- Implanting a T-branch, How I do it? (videos)
- Outcomes and durability of fenestrated endografts
- Tips and tricks for branched endografts
- Renal outcomes following FEVAR & BEVAR

Tuesday, May 16 / 08.30 - 16.30

Arch and ascending

Chairman: *Tilo Kölbel* (Hamburg, Germany)

Live case: 1 arch branch case

- Welcome & outline of the day
- Arch endografts device overview, planning and sizing, results
- Accesses to the ascending aorta
- Ascending aorta endografts device overview, planning and sizing, results
- Endovascular repair of type A dissections
- Chronic type B dissections: innovative techniques
- Video cases, tips & tricks

20:00 Gala dinner: L'Ecume des Mers

(Meeting point at the restaurant: 10, rue Pas - Lille)

Wednesday, May 17 / 08.30 - 16.30

TAVI + complex cases discussion

Chairman: *Stéphane Haulon* (Lille, France)

Live case: 1 TAVI

- Welcome & outline of the day
- Aortic root surgery
- Best practice in TAVI
- FEVAR & BEVAR for chronic dissections
- Spinal cord ischemia prevention
- Benefit of CBCT
- Fenestrated cuffs for proximal type 1 endoleak (EVAR rescue)
- Secondary procedures after FEVAR

Thursday, May 18 / 08.30 - 16.30

Hybrid rooms + hands on workshop

Chairman: *Stéphan Haulon* (Lille, France)

Live case: type 2 endoleak translumbar embolization

- Welcome & outline of the day
- Imaging - basics radiation physics
- Imaging - the dose battle
- Hybrid OR: benefits & room planning

- Afternoon hands-on workshop:
 - FEVAR & BEVAR bench deployment
 - Percutaneous closure devices
 - 3D workstation planning
 - Simulators

Friday, May 19 / 09.00 - 11.00

Final exam



Dinners

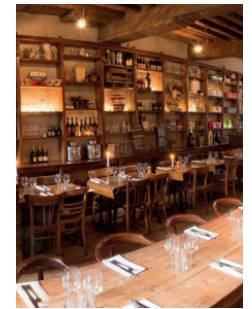
Wednesday, May 10 - Welcoming dinner

Meeting point directly at the restaurant 20.00

LE BARBUE D'ANVERS

1 bis, rue St-Etienne - Lille

This tavern is located at the bottom of a courtyard in a beautiful brick building from the sixteenth century. Its particularly warm, generous and sophisticated regional cuisine will seduce you. Essential for both Lille for all those who want to discover the North soul!



Thursday, May 16 - Closing dinner

Meeting point directly at the restaurant 20.00

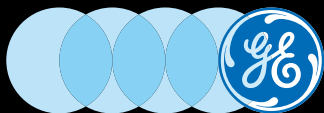
L'ÉCUME DES MERS

10, rue Pas - Lille

In the heart of Lille, near the Grand Place and ten to fifteen minute walk from Lille Flandres and Lille Europe, the restaurant « L'écume des Mers » opens its doors every day of the week. Contemporary, space and light, the restaurant offers the dynamic atmosphere of the ground floor or the more intimate mezzanine, equally comfortable.



Acknowledgements 2017



HOTELS LIST (city center)

Novotel Lille Centre Grand Place****

116, rue de l'Hôpital Militaire - 59800 Lille

Tel: + 33 (0)3 28 38 53 53

Distance by metro: 20 min.

Novotel Lille Centre Gare****

49, rue de Tournai - 59000 Lille

Tel: + 33 (0)3 28 38 67 00

Distance by metro: 15 min.

Ibis Lille Centre Gares***

29, avenue Charles St Venant - 59800 Lille

Tel: + 33 (0)3 28 36 30 40

Distance by metro: 25 min.

Hôtel Calm**

14, rue du Molinel - 59000 Lille

Tel: + 33 (0)3 20 31 55 52

Distance by metro: 15 min.

ORGANIZATION: divine [id] agency • www.divine-id.com

• Stéphanie Meyer: smeyer@divine-id.com • Mob. +33 (0) 646 10 48 26

• Véronique Bergeron Moreau: vbergeron@divine-id.com

• 17, rue Venture - 13001 Marseille, France • Tel. +33 (0) 491 57 19 60 • Fax +33 (0) 491 57 19 61

